

GLOBAL

PARTITIONS
YOUR GLOBAL RESOURCE

GLOBAL polymer toilet partitions are the ideal choice for high-traffic areas. They are environmentally safe and sanitary, never need painting, and will not easily dent or chip. It is the material of choice for low maintenance.

HDPE solid polymer is water resistant and unaffected by high humidity or corrosive environments and cannot delaminate. Most commercial cleaning agents will not damage the surface.

GLOBAL HDPE polymer has homogeneous color and material compound throughout. An aluminum heat sink strip is applied to the bottom edge of all doors and panels as standard.



FAST TRACK: 48 Hour Shipping

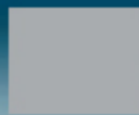
Polymer Color Selection Guide



Tan
9202



Charcoal
9237



Gray
9200



Cream
9235



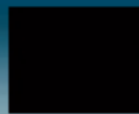
Azure
9231



White
9201



Moss
9233



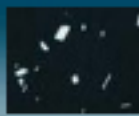
Black
9205



Burgundy
9211



Blue
9203



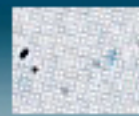
Black Confetti
9217



Folkstone Gray
9400



Ivory Essence
Speckle
9500



Blue Sapphire
Speckle
9502



Garnet Speckle
9501

COLORS

Scranton Products solid plastic toilet compartments are available in a variety of popular, designer color to compliment virtually any decor.

CLASSICS COLLECTION – SOLID



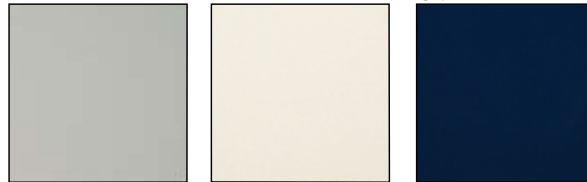
BURGUNDY HUNTER MOCHA



BLACK FOSSIL PARCHMENT



WHITE BEIGE CHARCOAL GREY



GREY LINEN BLUEBERRY

IMPRESSIONS COLLECTION – SPECKLED



PAISLEY SANDSTONE AZURE



CAPPUCCINO GLACIER GREY SANDCASTLE



EVERTUFF-EX COLLECTION – TEXTURED



BLACK-EX METALLIC GREY-EX BEIGE-EX



PAISLEY-EX



SCRANTON PRODUCTS

Worry-Free Brands. Your Every Need.

* 100% Post consumer available
 * Custom colors available

Colors shown are as close to actual colors as allowed by the printing process. Actual samples are available.

Solid Plastic Finishes

Hadrian continues to lead in the development and production of high quality finishes by introducing the most current color selection in the industry with particular sensitivity to the needs of the architectural and interior design community.

Polypropylene (HDPP)



* Not available for standard solid plastic (SSP)

** Not available for Arch solid plastic

Polyethylene (HDPE)

