

### Purpose:

The ND-TA-SG wall guard is designed to shield the wall from water splashing on the restroom wall. This stainless steel splash guard has a hole laser cut from the upper middle for the ThinAir hand dryer to perfectly fit into it. This hole is where you install the hand dryer to further eliminate any moisture from blowing onto your restroom wall's finish. The ThinAir hand dryer is ADA compliant and the splash guard preserves this important stat.



### Construction:

The Splash Guard is fabricated of 20 gauge stainless steel, #4 satin finish.

### Overall Dimensions:

16" wide x 34" tall.

Modified Cutout 8.9" x 13.9" (Approximate)

### Installation Guide:

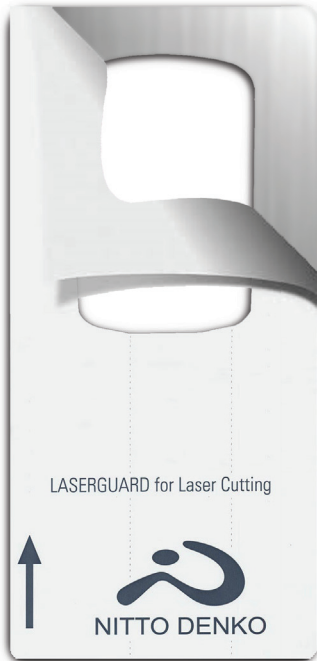
The Splash Guard is installed behind the ThinAir® Hand Dryer. Double-sided tape or liquid adhesive (Silicone, Mirror Adhesive) can be used to adhere onto wall. Adhesive silicone and liquid nails are not included. Please see Page 2 for a more detailed installation guide.

### Warranty:

Limited 1 year warranty covers manufacturer defects. Newton Distributing Company will replace the product at no charge if defects due to manufacturing processes are shown to exist. Damage caused by improper use or care of product is the sole responsibility of the user.

**Front**

Laserguard Film



**Back**

Non-Film Side



1. Carefully remove protective film from FRONT of Splash Guard.
2. Apply adhesive or double-sided tape to BACK (non-film side) of Splash Guard and adhere to wall. Make sure you line the wall guard perfectly up with where the hand dryer will be installed. Ensure you meet all ADA height requirements.



**Temporary Tape**

(After liquid adhesive application)



**Finished Product**



3. When using liquid adhesive, please secure Splash Guard temporarily with masking tape (or similar) until product cures. Once the adhesive properly sets (typically 2-4 hrs) carefully remove tape.
4. Your splash guard is installed and ready for action.