

Restroom Toilet Partitions

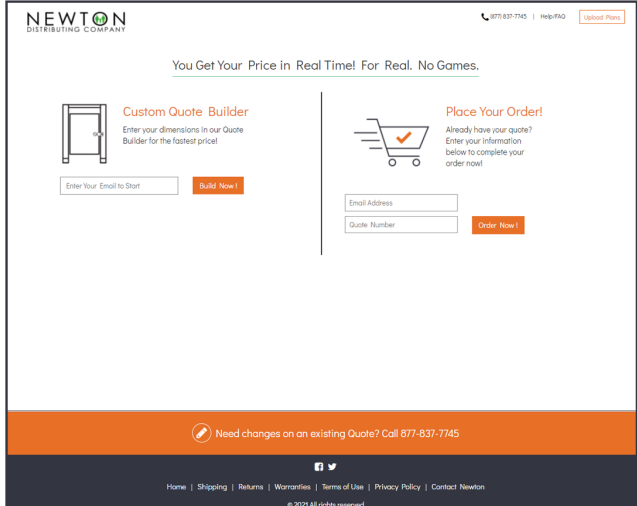
See the most common toilet partition materials that are **perfect** for any commercial restroom!

Measure Your Restroom Layout

You Have Your Toilet Stall Measurements, Now What?

It's never been easier with the new Newton Distributing Quote Builder. The tool allows you to enter your preferred toilet partition sizes (by inches) and you get your price in real time. Simply follow the step-by-step process and at the end of the process, your price is on the screen in real time! No delayed emails or waiting for a rep to call you, the price appears like magic right before your eyes. No waiting on a separate logistics quote either. The price you see is the price you get!

Now, read on and get a better understanding of the various toilet partition materials you can choose from!



The screenshot shows the Newton Distributing Company website's Quote Builder interface. At the top left is the logo "NEWTON DISTRIBUTING COMPANY". On the right, there are contact details: "877-837-7145 | Help/FAQ" and a "Logout/Plan" button. The main heading reads "You Get Your Price in Real Time! For Real. No Games." Below this, there are two main sections: "Custom Quote Builder" and "Place Your Order".

Custom Quote Builder
Enter your dimensions in our Quote Builder for the fastest price!
Enter Your Email to Start

Place Your Order
Already have your quote? Enter your information below to complete your order now!
Email Address
Quote Number

At the bottom, there is a footer with a note: "Need changes on an existing Quote? Call 877-837-7145" and a navigation bar with links: Home | Shipping | Returns | Warranties | Terms of Use | Privacy Policy | Contact Newton. The copyright notice "© 2021 All rights reserved" is also present.

Visit our Quote Builder Today:
tpquotes.newtondistributing.com

Powder Coated Steel Toilet Partitions



High Quality at the Best Overall Value!

Newton offers the best value in the industry on toilet partitions. Powder coated toilet partitions are a prime example of value. Affordable and offer durability, high recycled content, fire resistance, and graffiti resistance – all at an entry-level price!

Powder coated steel restroom partitions have one of the largest selections of colors making it an unbeatable advantage over other materials.

Highlights:

- High Recycled Content
- Industry-Best Fire Resistance
- Anti-Graffiti
- Fast Delivery / In-Stock Material
- **Lower Unit Price**
- Easier, Less Costly Installation
- Large Selection Of Designer Powder Coated Colors
- Secure, Concealed Hardware
- Durable And Repairable Material



99%

On-Time Delivery

- The Best In Stock Programs
- Reliable Lead Times
- Colors Offered In Stock

98%

Damage-Free Shipments

- The Best Packaging Process
- Larger Shipping Containers
- In Stock Items = No Surprises



Stainless Steel Toilet Partitions


High Quality at the Best Overall Value!

Stainless steel is highly durable and aesthetically pleasing. After all, you see it everywhere from kitchens to wall protection. Moreover, it can be a smooth satin or textured stainless steel construction. They are worth the penny from small to large, high traffic restrooms.

Highlights:

- High Recycled Content
- Industry-Best Fire Resistance
- Corrosion Resistant
- Durable Material
- Hygienic

Finishes:

- #4 Brushed Stainless Steel
 - Embossed Stainless Steel
 - Hybrid Stainless Steel Bringing Both Finishes Together
 - Custom Finishes, Are Available Upon Request
- 

Solid Plastic Toilet Partitions

Mid-Range Pricing that Lasts Forever!

Solid plastic toilet partitions are made from durable high density polyethylene (HDPE) material and offer the utmost in strength and durability. These stalls are ideal for high traffic areas and prevent graffiti and vandalism.

Solid plastic toilet dividers are perfect for any public restroom. Additionally, they offer various colors and are an affordable option with middle ranged pricing. A great choice for a sustainable, long lasting product.

Highlights:

- Certified Class B Fire Rating
- In Stock
- Solid Core With No Air Pockets
- Fast Lead Times
- Built To Last
- Durable Material
- Recycled Content
- Industry Leading Warranty



Plastic Laminate Toilet Partitions

Match Your Restroom with Any Color or Texture You Want!

Plastic Laminate has a low to mid ranged price for stalls, depending on what colors or texture you choose. Easily a very fashionable choice for bathroom stalls with all the options at your fingertips. Choosing laminate allows your installers to have a smooth and easy project with lasting durability. It's a win-win product for sure.

Highlights:

- Low to Mid Range Price Point
- Huge Selection of Colors/Textures
- Aesthetically Pleasing for Any Job
- Easy to Install & Durable



Phenolic Toilet Partitions

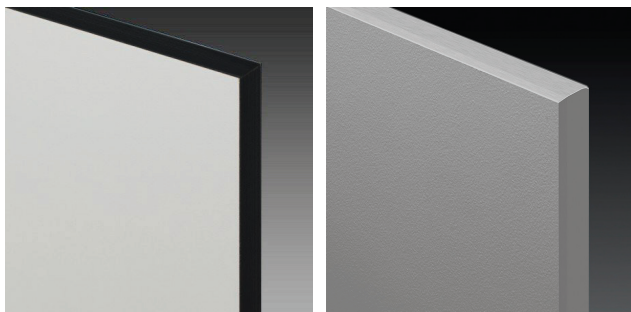
Black-Core and Color-Thru Phenolic Options Available

Black-core toilet partitions have a black edge around the panels. This design can save you some money versus color through. Due to the vast customization options and high durability, your toilet partitions will last and look good for a long time.

The color thru phenolic option puts the customized choices you picked on display. Meaning that every side of your stall features that finish you chose. Also, black-core and color through are similar in durability and color options.

Highlights:

- Large Assortment of Color Options
- Black-Core and Color Through Options
- Highly Customizable
- Highly Durable
- Aesthetically Pleasing Options



Black-Core

Color Through



Mounting Options



The Most Popular Option: Headrail and Floor Braced

Without doubt, the **most popular** and economical restroom partition style on the market. Overhead braced partitions are durable for any new project or full remodel.

With a construction consisting of pilasters that are attached to the floor and are stabilized at the top of the pilaster with a headrail. Extremely durable and affordable!

Easier Install with Floor Mount Braced Stalls

Ideal for restrooms with concrete floors, these provide a clean, level aesthetic. Floor mounted restroom stall partitions are considered easier to install in the right circumstances.

Particular materials can help limit the amount of rust and corrosion. Floor mounted does exactly that!



Mounting Options

Make Cleaning Easier with Ceiling Mounted Toilet Partitions

Provide an easier floor cleaning solution for your washroom maintenance team. Unobstructed floor space beneath the stalls means you have an attractive and aesthetically appealing solution.

Proper installation requires attachment to structural ceiling support.



Get Ultra Durability with the Headrail and Floor Braced

Featuring mountings from the floor to ceiling means your toilet compartments will be extremely stable and durable. A perfect solution for busy restrooms where vandalism resistance is critical.

Recommended floor to ceiling height is **96"** and requires ceiling reinforcement.

Every Toilet Partition Brand At Your Fingertips!

Don't See Your Preferred
Partitions Brand?

Call Us at 877-837-7745,
We Do Offer It!

hadrian® Accu-Tech®

ASI® Accurate
Partitions

ASI® Global
Partitions

Bradley®
Mills Partitions

BOBRICK

AMERICAN SANITARY
Partition Corporation

ALI

Metpar



SCRANTON
PRODUCTS.

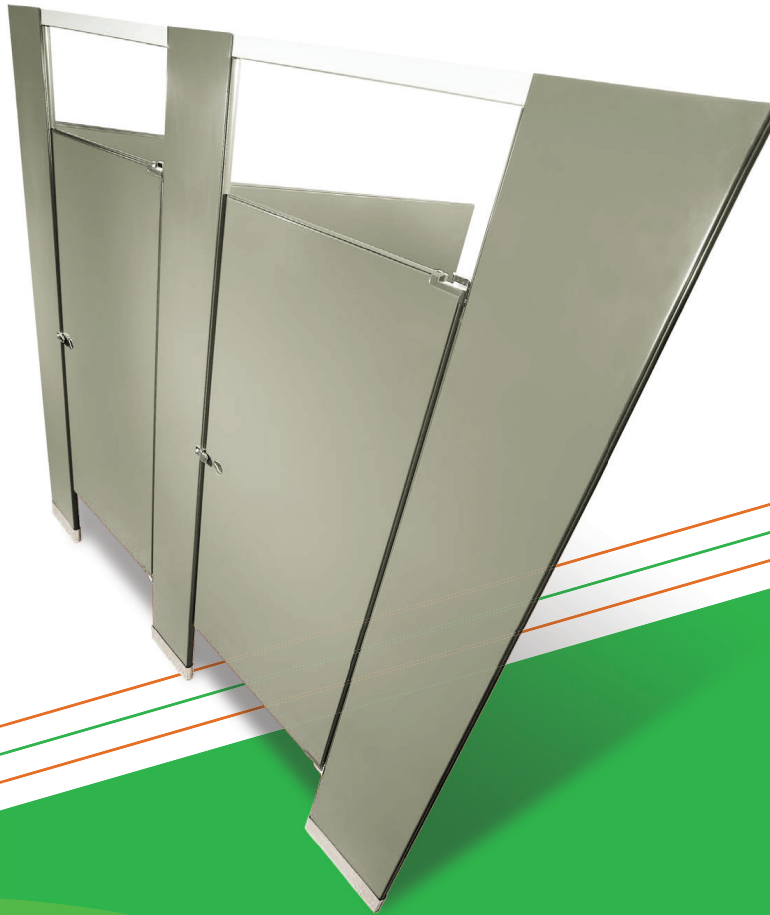
AAMCO
ALL AMERICAN METAL CORP.

ironwood

GENERAL
PARTITIONS

PSISC®
PARTITION SYSTEMS INTERNATIONAL
OF SOUTH CAROLINA
"Promoting a Greener Environment"
A DIVISION OF CSISC

FLUSHMETAL
PARTITIONS A KARP BRAND



Contact Us

Ph: 877-837-7745

Fx: 617-969-4071

sales@newtondistributing.com

NewtonDistributing.com